

Note: See also "Recommended PCB Drawing to fit ECB9B2 Enclosure"

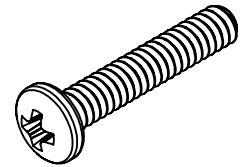
Divots For Case Mounting (2 PLCS)
Drill Out $\varnothing 1/8"$
Use #4 Flat Head

Base

Cover

Same Dimensions On Top and Bottom

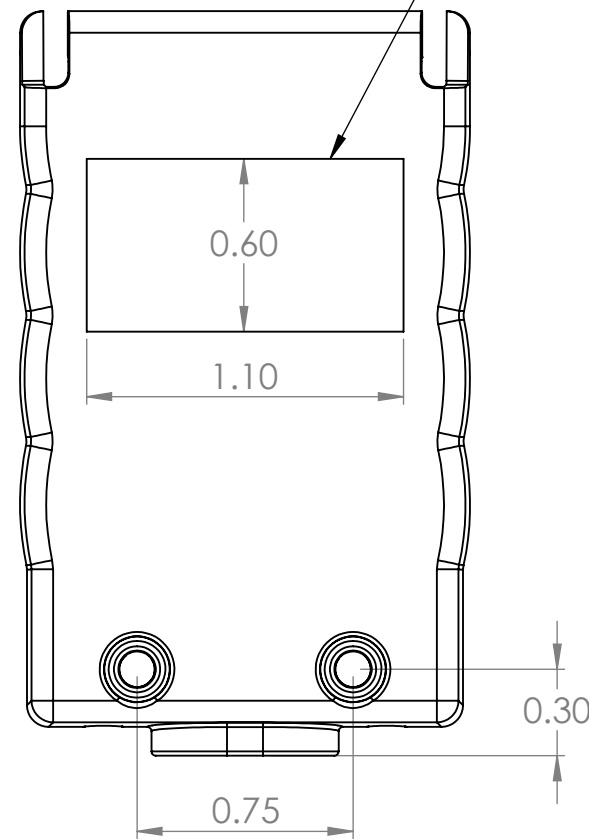
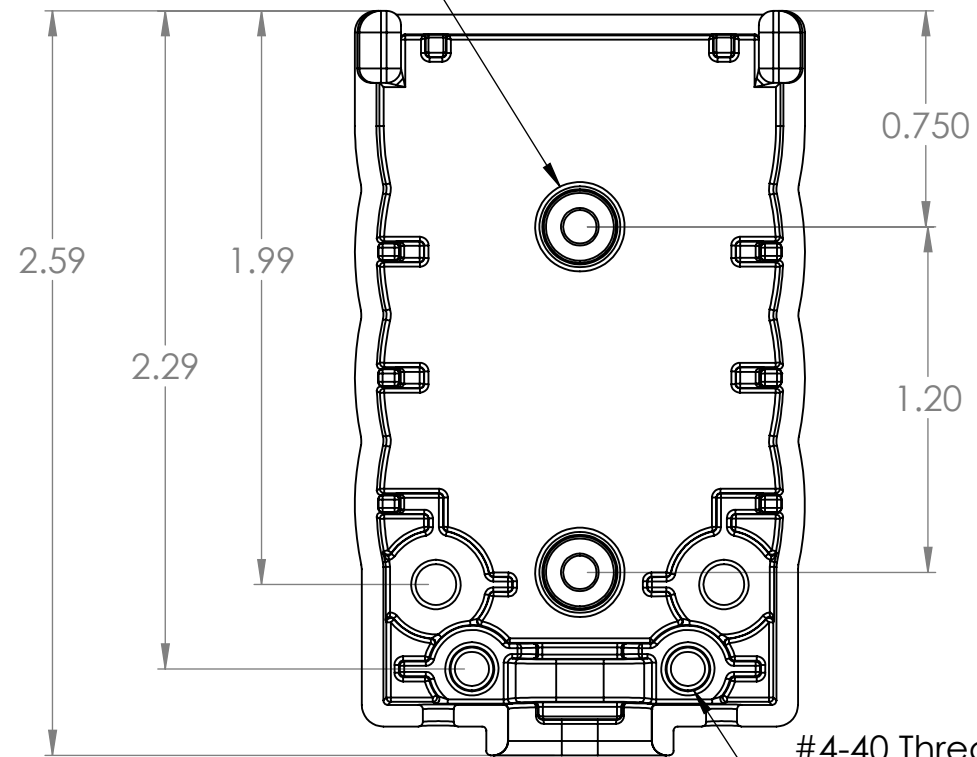
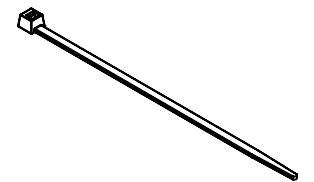
#4-40 Pan-Head, 5/8"
For Case Enclosure
(Qty:2)



3.5MM OD x 5.5MM
Snap Rivet
For PCB Mounting
(Qty: 2)



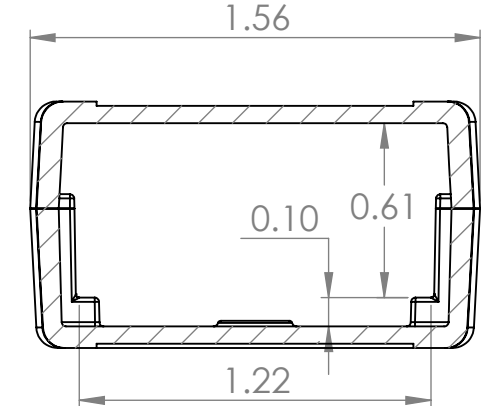
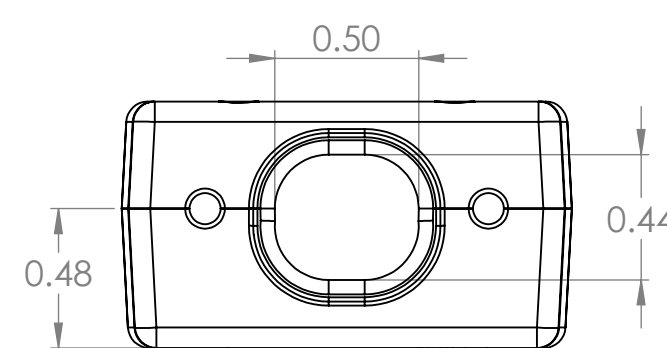
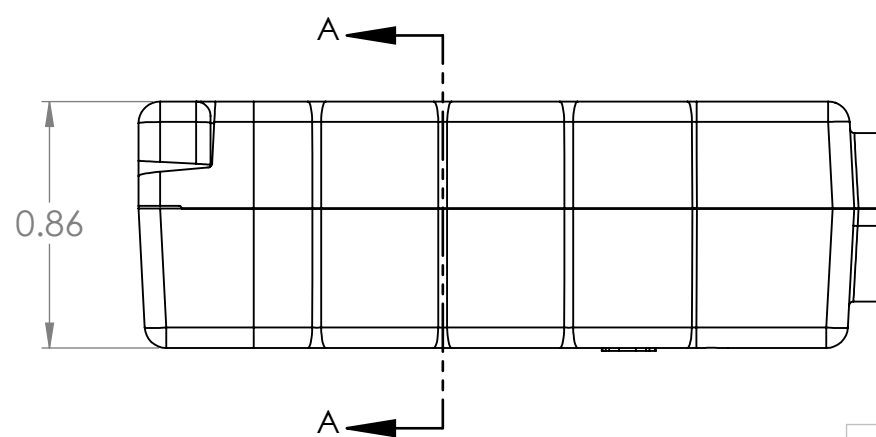
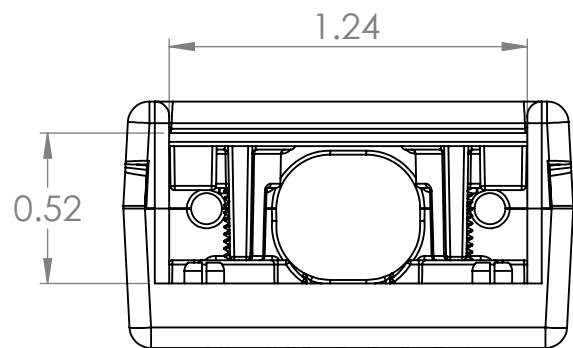
0.1" Zip Tie, 4"
For Wire Strain Relief
(Qty:1)



Front Assembly

Back Assembly

SECTION A-A



DIM: INCH	DATE: 09/19/2024	RoHS COMPLIANT: Yes
 WINFORD ENGINEERING, LLC 4561 GARFIELD ROAD AUBURN, MI 48611		
www.winford.com	989-671-9721	

DESCRIPTION: DB15HD PCB Enclosure Kit	
PART NUMBER (S) ECB9B2-N	PART REVISION A