

Note: See also "Recommended PCB Drawing to fit ECB9B2 Enclosure"

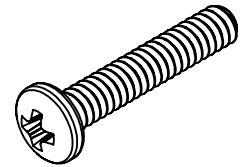
Divots For Case Mounting (2 PLCS)
Drill Out $\phi 1/8"$
Use #4 Flat Head

Base

Cover

Same Dimensions On Top and Bottom

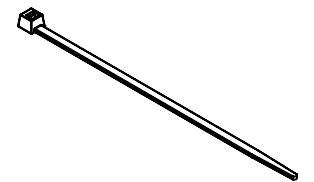
#4-40 Pan-Head, 5/8"
For Case Enclosure
(Qty:2)



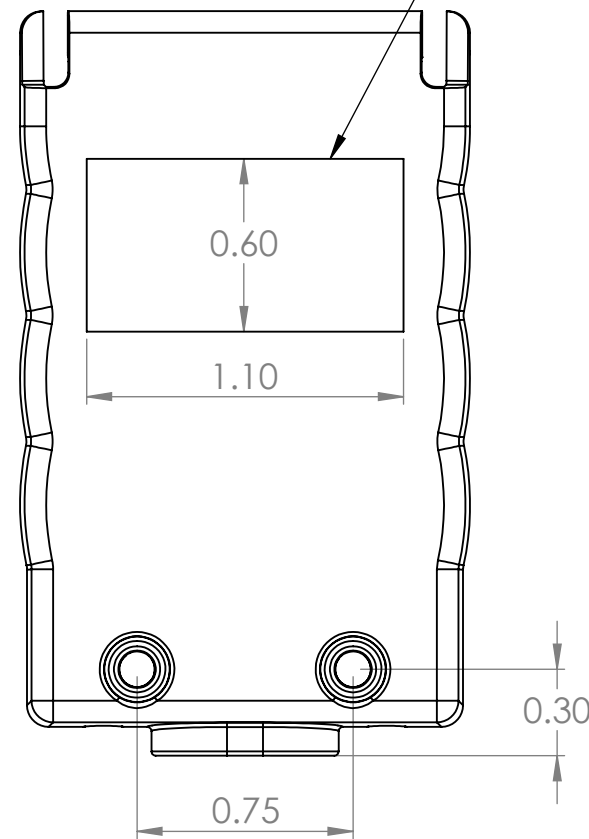
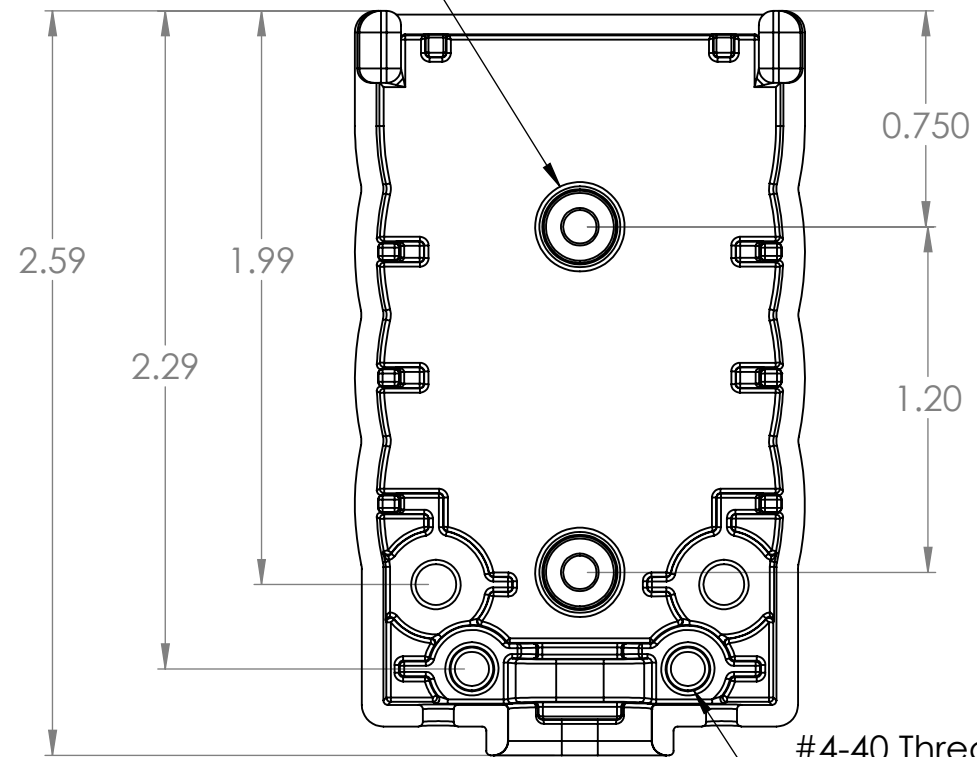
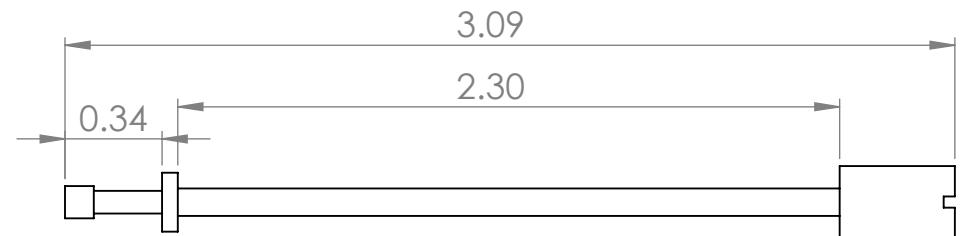
3.5MM OD x 5.5MM
Snap Rivet
For PCB Mounting
(Qty: 2)



0.1" Zip Tie, 4"
For Wire Strain Relief
(Qty:1)

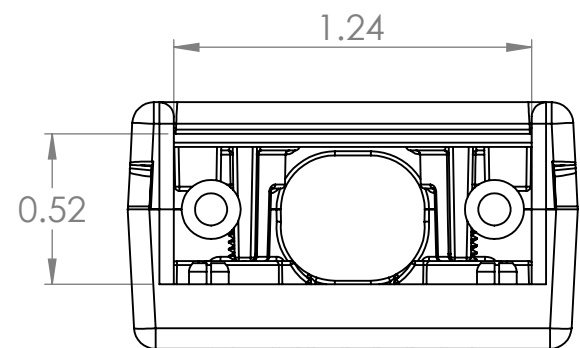


#4-40 Thumbscrew, 2.90"
(Qty:2)

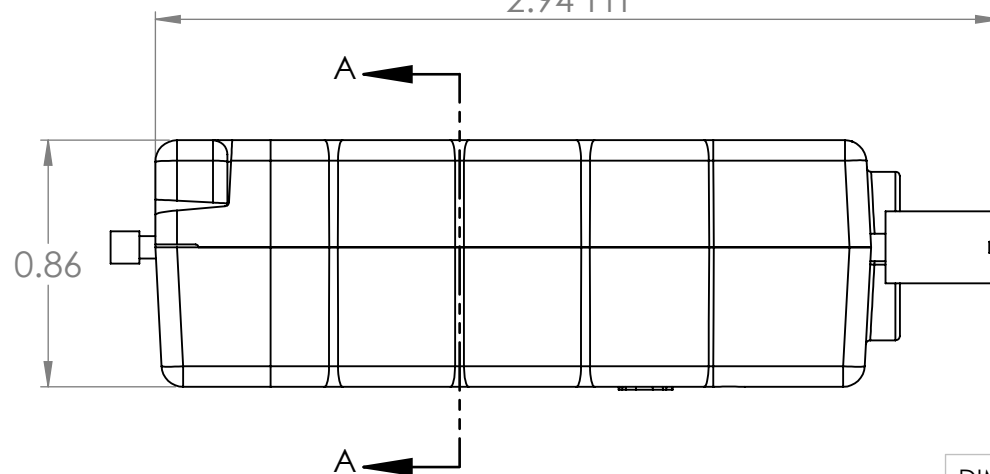


#4-40 Threaded Insert Molded in (2 PLCS)

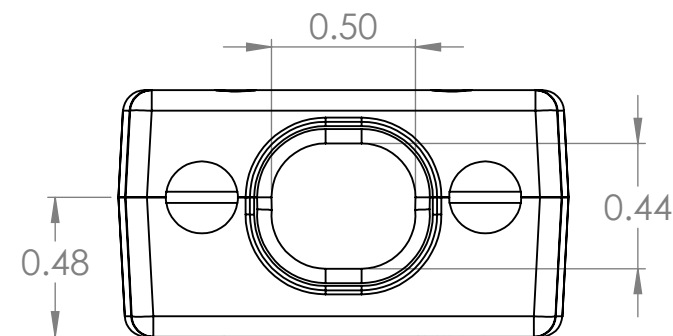
Front Assembly



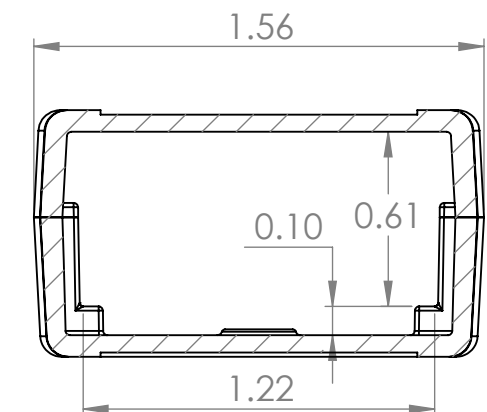
2.94 TYP



Back Assembly



SECTION A-A



DIM: INCH DATE: 09/19/2024 RoHS COMPLIANT: Yes



WINFORD ENGINEERING, LLC
4561 GARFIELD ROAD
AUBURN, MI 48611

www.winford.com

989-671-9721

DESCRIPTION:

DB15HD PCB Enclosure Kit

PART NUMBER (S)

ECB9B2-T

PART REVISION

A