

4

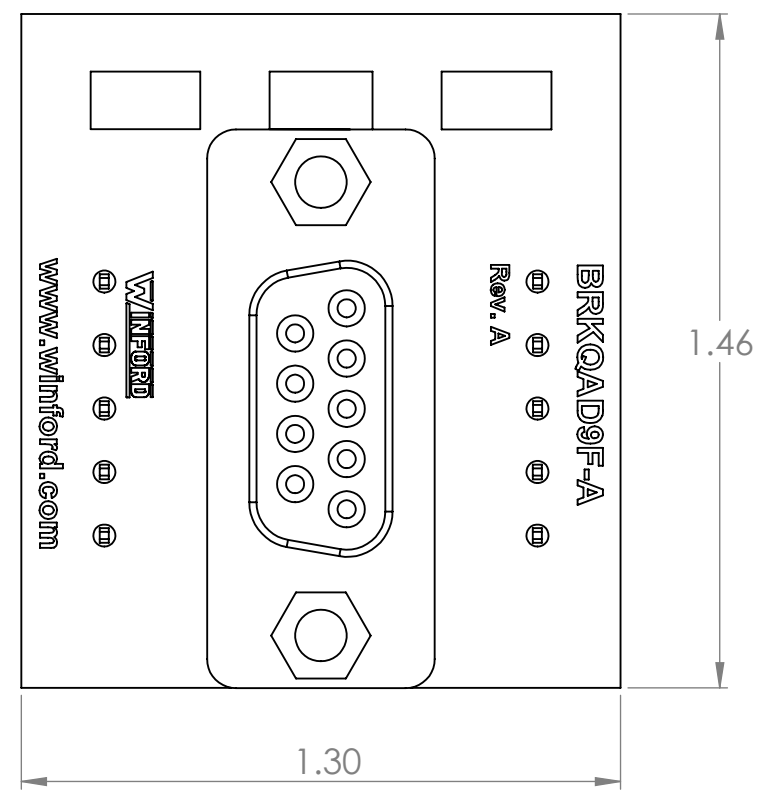
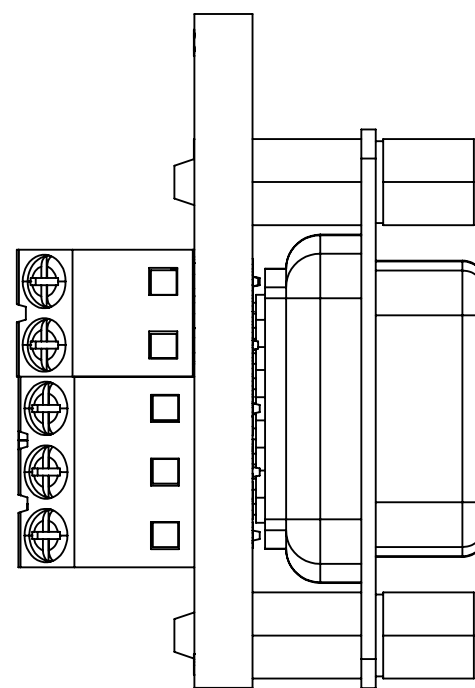
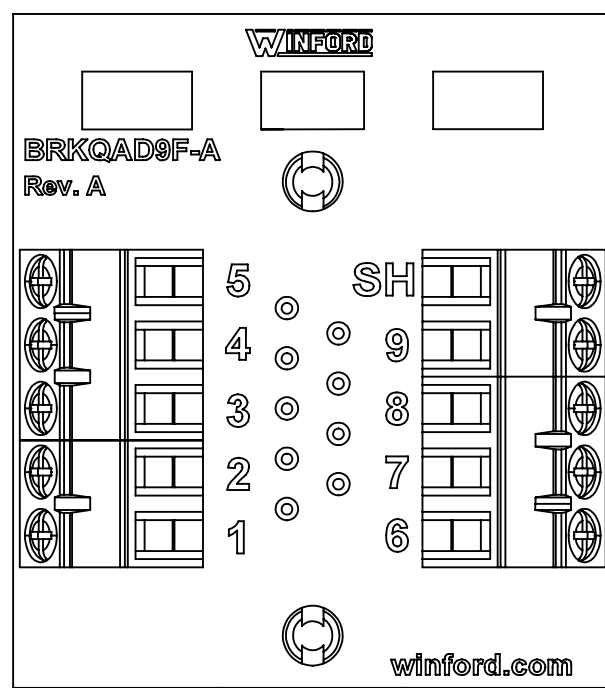
3

2

1

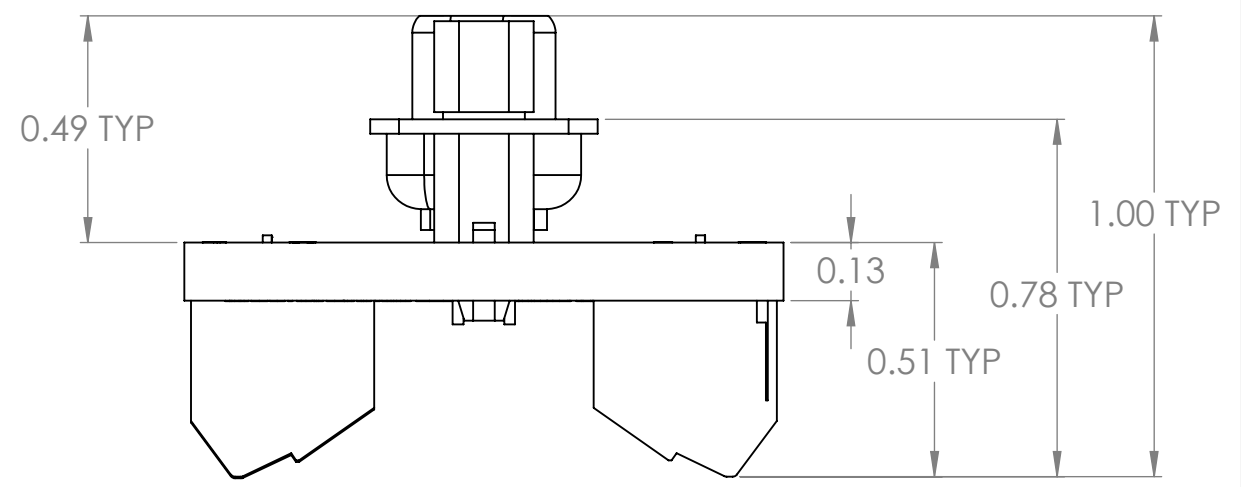
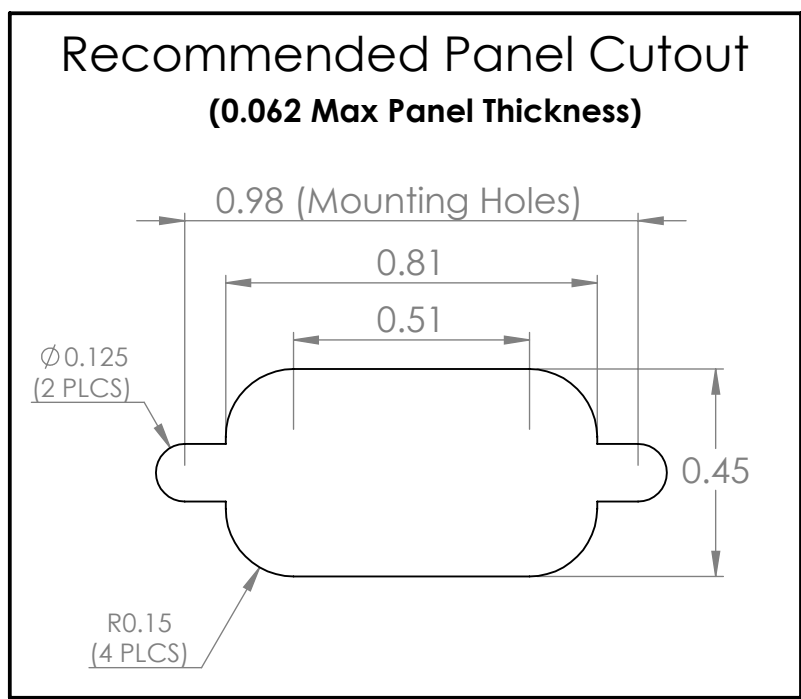
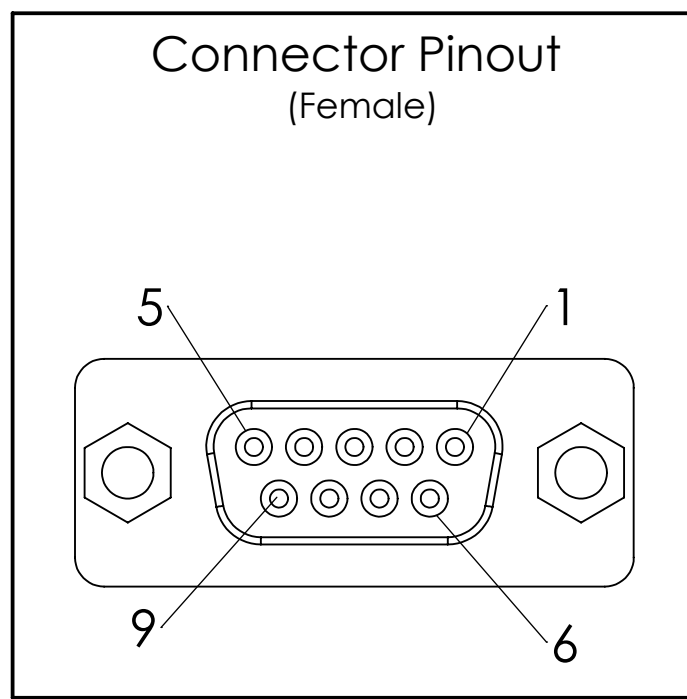
B


B



A

A



DIM: INCH	DATE: 01/26/2022	RoHS COMPLIANT: Yes	DESCRIPTION:
 WINFORD ENGINEERING, LLC 4561 GARFIELD ROAD AUBURN, MI 48611			DB9 Female Panel Mount Breakout Board
www.winford.com		989-671-9721	PART NUMBER (S) BRKQAD9F-A
			PART REVISION A

4

3

2

1